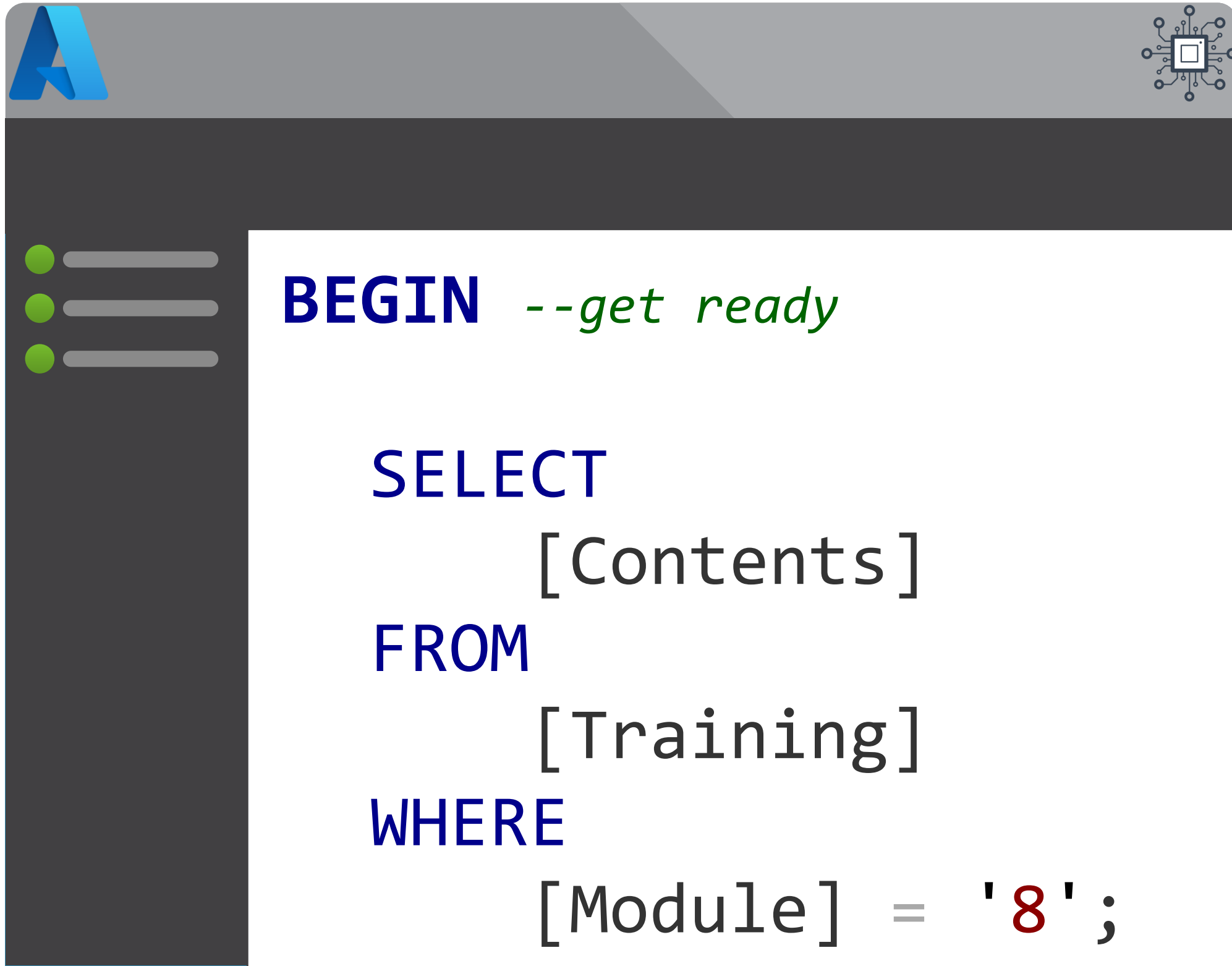


Module 8

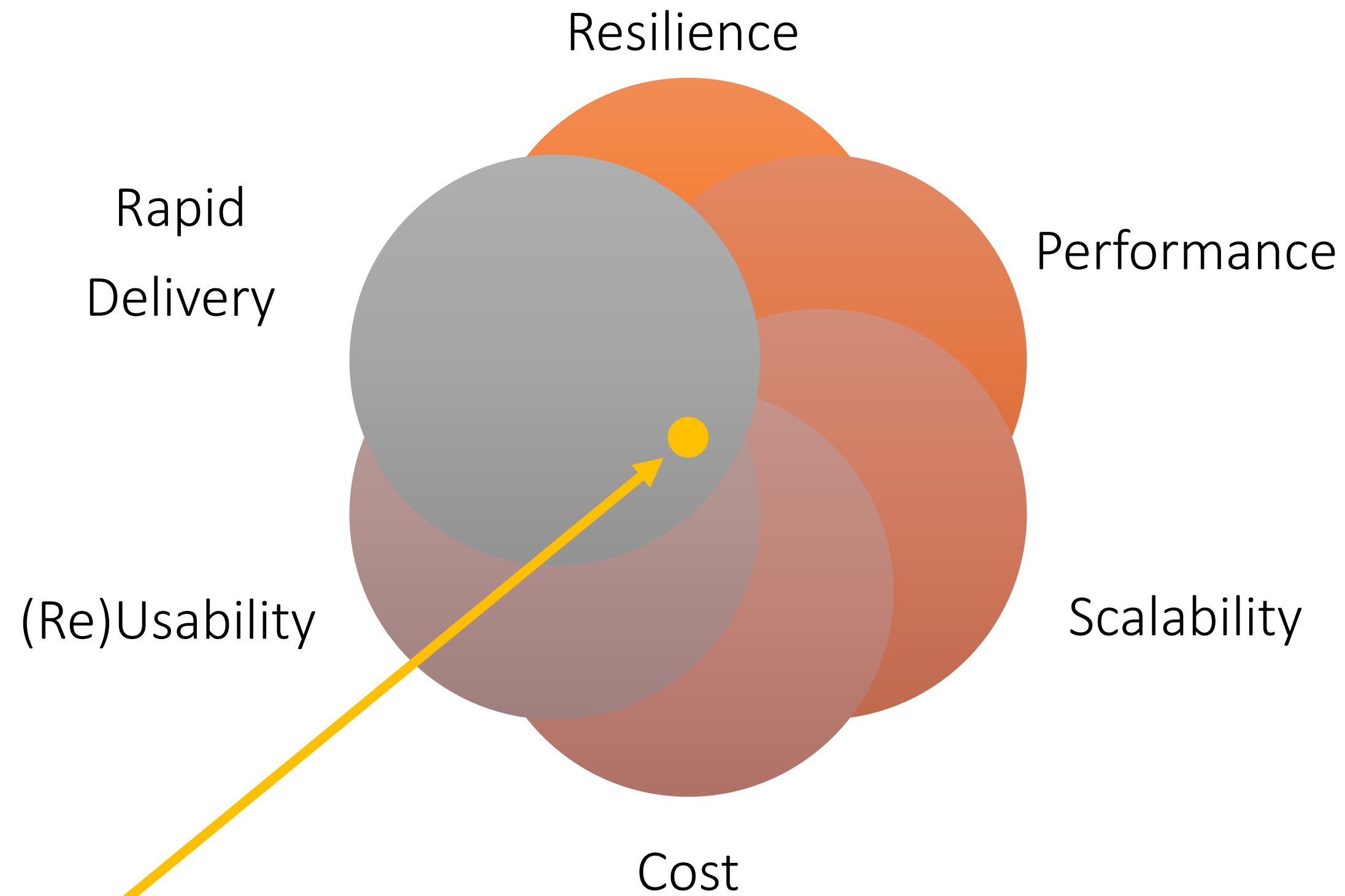
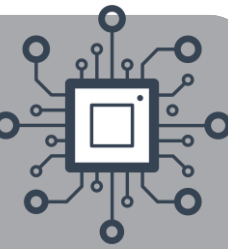
Security



- Service Principals
- Managed Identities
- Azure Key Vault Integration
- Customer Managed Keys
- Pipeline Access & Permissions



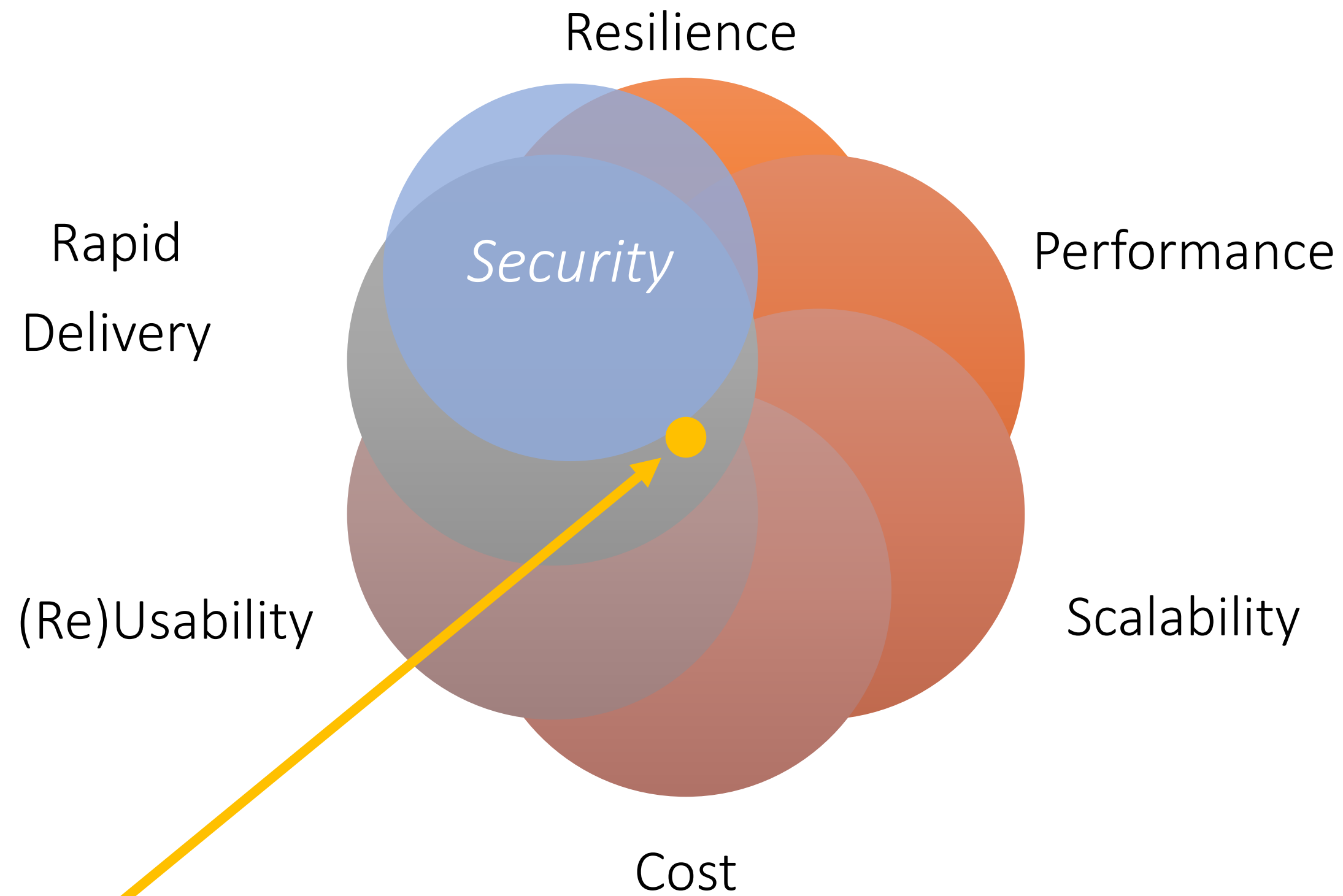
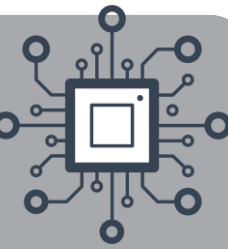
Design Priorities



The Perfect Solution



Design Priorities



The Perfect Solution

MCRA

Capabilities

What cybersecurity capabilities does Microsoft have?



Build Slide



Azure Native Controls

What native security is available?



Attack Chain Coverage

How does this map to insider and external attacks?

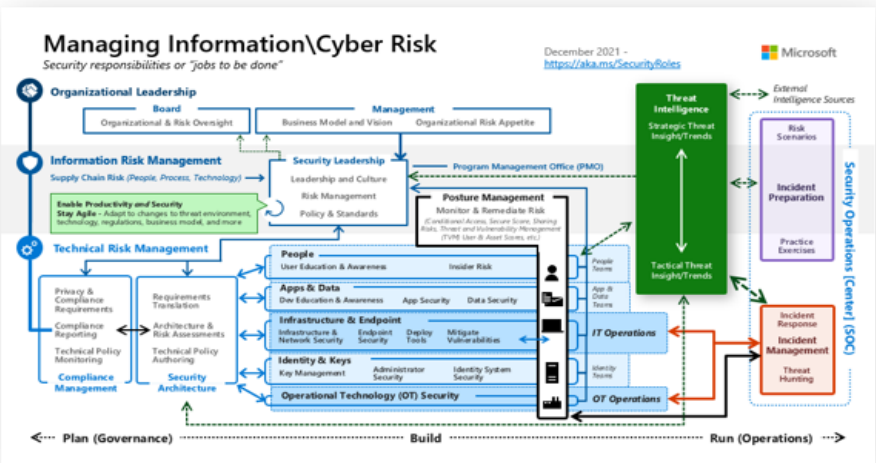


Build Slide



People

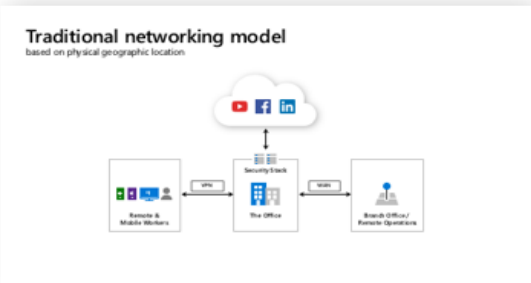
How are roles & responsibilities evolving with cloud and zero trust?



Multi-Cloud & Cross-Platform
What clouds & platforms does Microsoft protect?

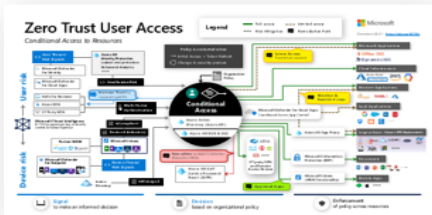


Secure Access Service Edge (SASE)
What is it? How does it compare to Zero Trust?

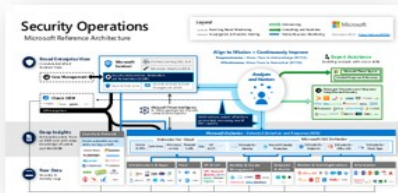


Zero Trust User Access

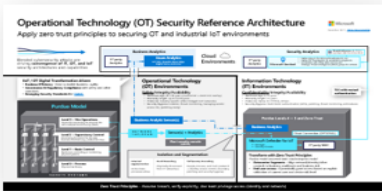
How to validate trust of user/devices for all resources?



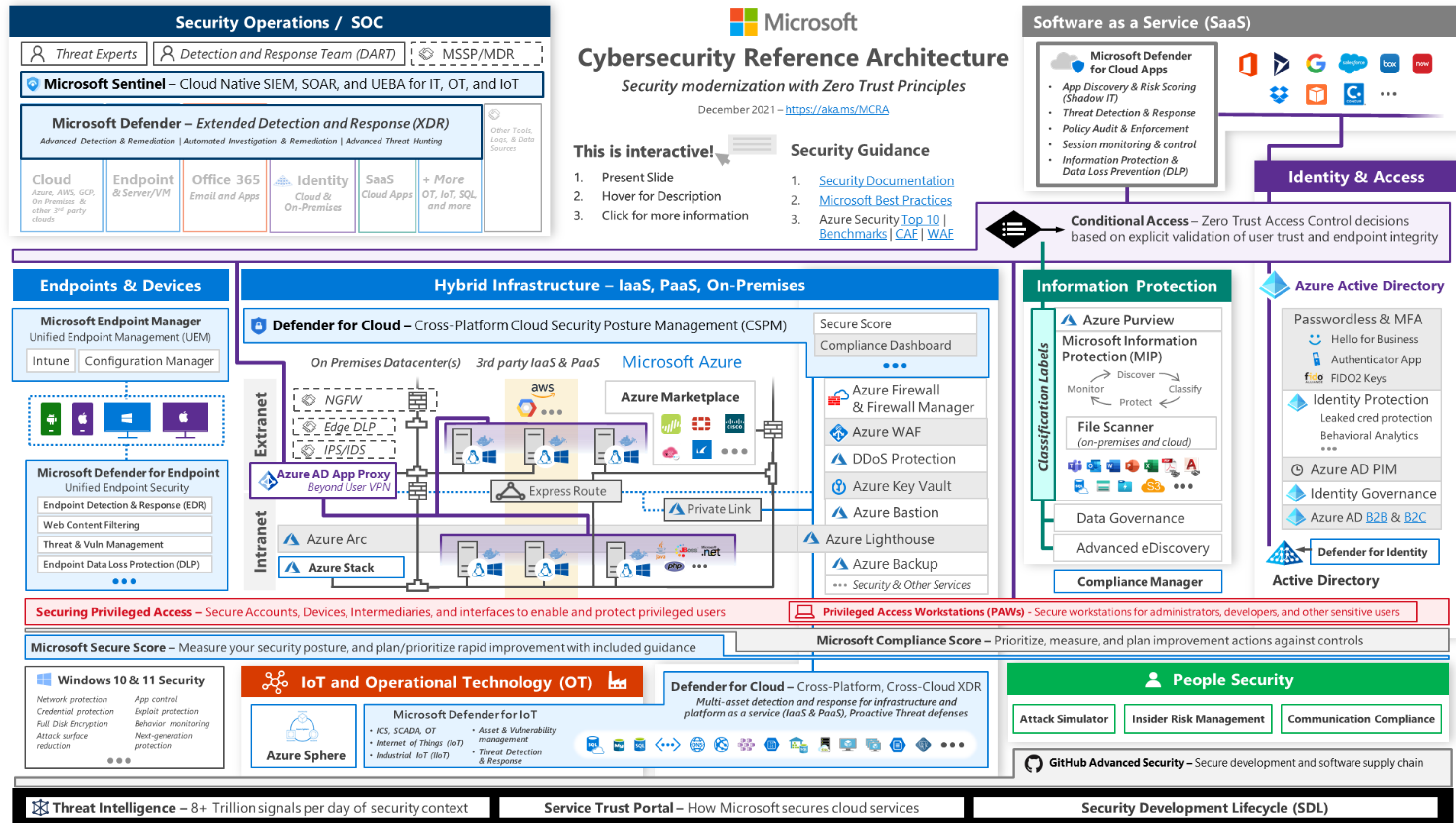
Security Operations
How to enable rapid incident response?



Operational Technology
How to enable Zero Trust Security for OT?



Capabilities



Module 8

Security



- Service Principals
- Managed Identities
- Azure Key Vault Integration
- Customer Managed Keys
- Pipeline Access & Permissions

Terminology Clarification & Properties

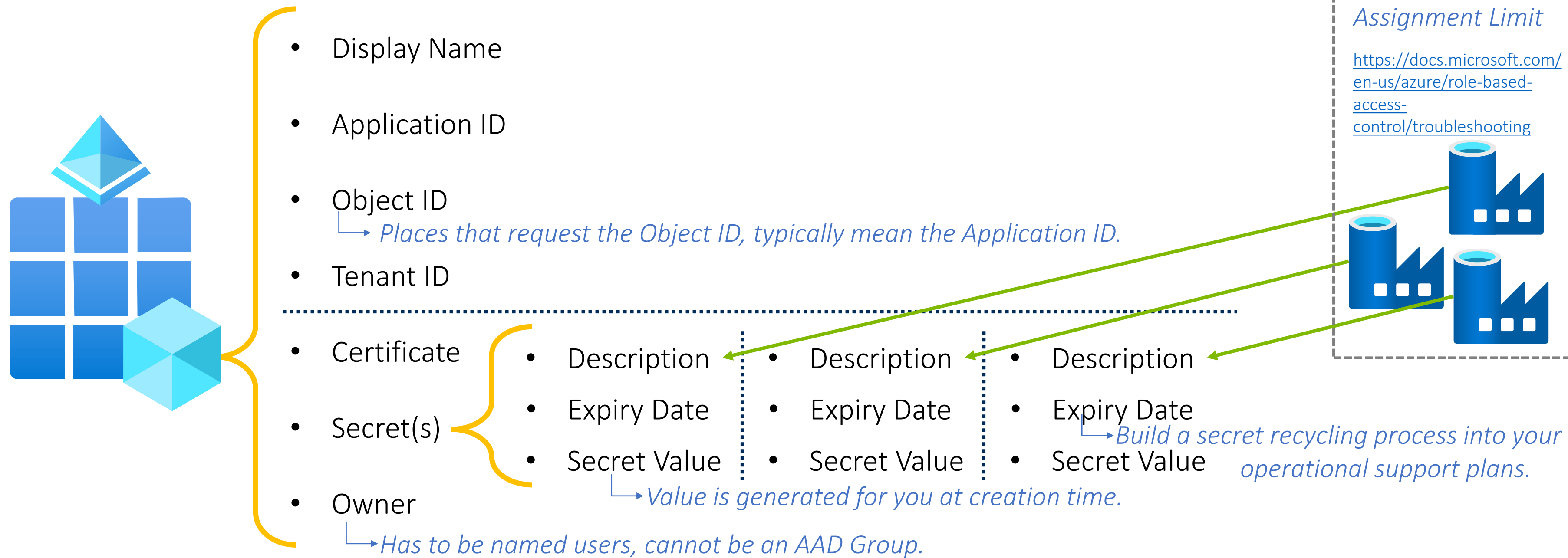
Service Account


Service Principal Name

SPN

System User

Application Registration





```
$sp = New-AzADServicePrincipal -DisplayName ServicePrincipalName
```


Service Account

Service Principal Name

SPN

System User

Application Registration



- Display Name
- Application ID
- Object ID
 - ↳ Places that request the Object ID, typically mean the Application ID.
- Tenant ID

- Certificate
- Secret(s)
- Owner
 - ↳ Has to be named users, cannot be an AAD Group.

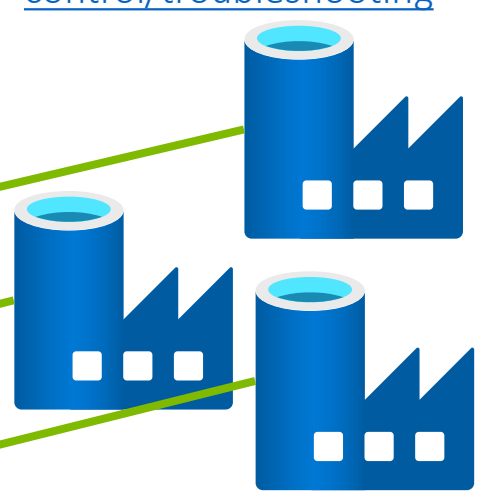
- Description
- Expiry Date
- Secret Value
 - ↳ Value is generated for you at creation time.


- Description
- Expiry Date
- Secret Value

- Description
- Expiry Date
- Secret Value
 - ↳ Build a secret recycling process into your operational support plans.

Subscription Role Assignment Limit

<https://docs.microsoft.com/en-us/azure/role-based-access-control/troubleshooting>





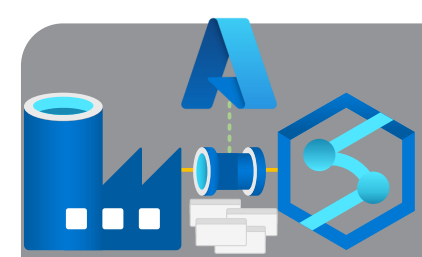
```
$sp = New-AzADServicePrincipal -DisplayName ServicePrincipalName
```


Module 8

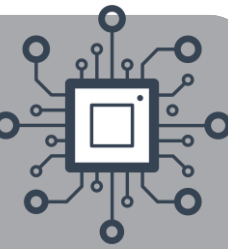
Security



- Service Principals
- **Managed Identities**
- Azure Key Vault Integration
- Customer Managed Keys
- Pipeline Access & Permissions



Managed Identities



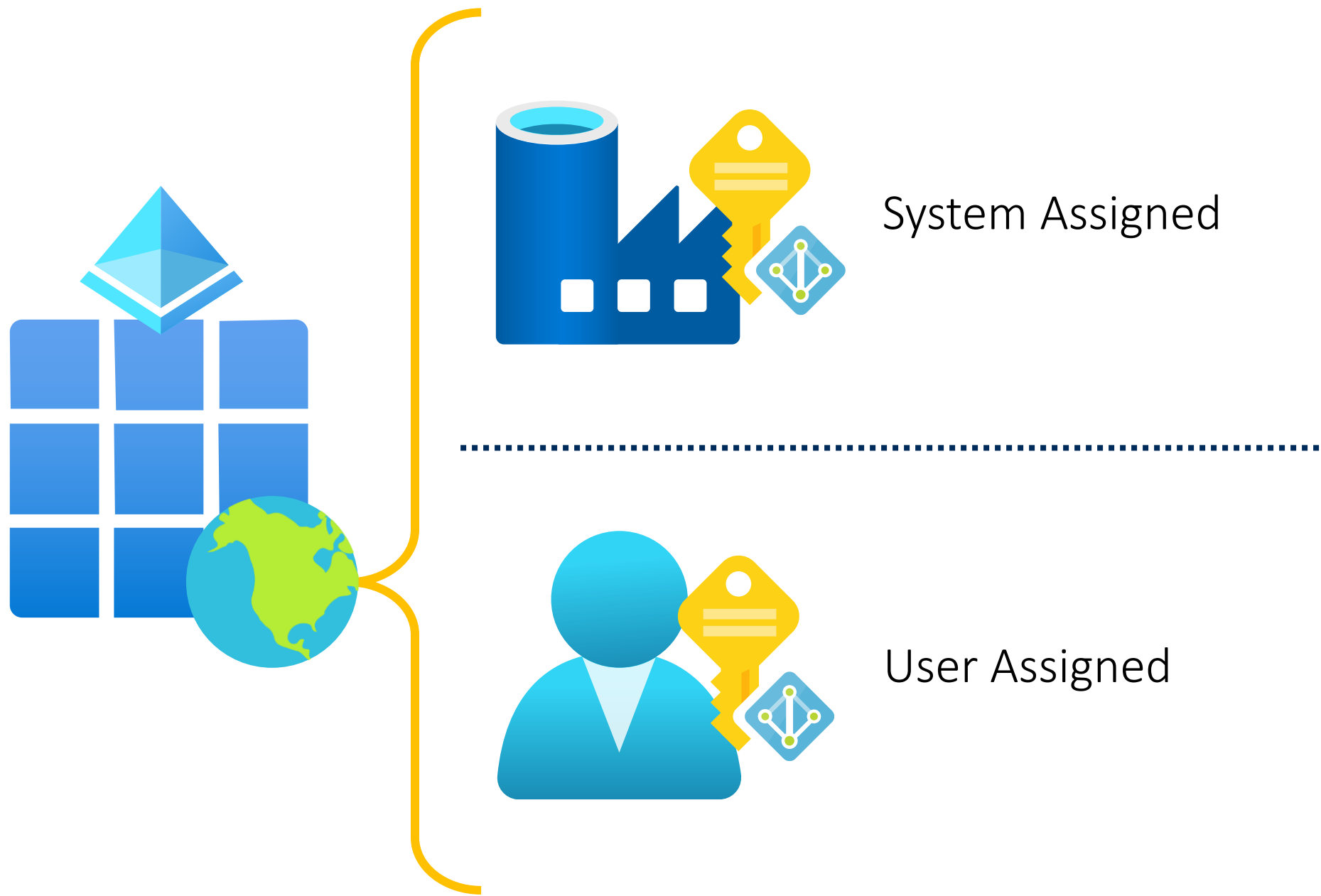
~~Service Account~~

Managed Service Identity

MSI

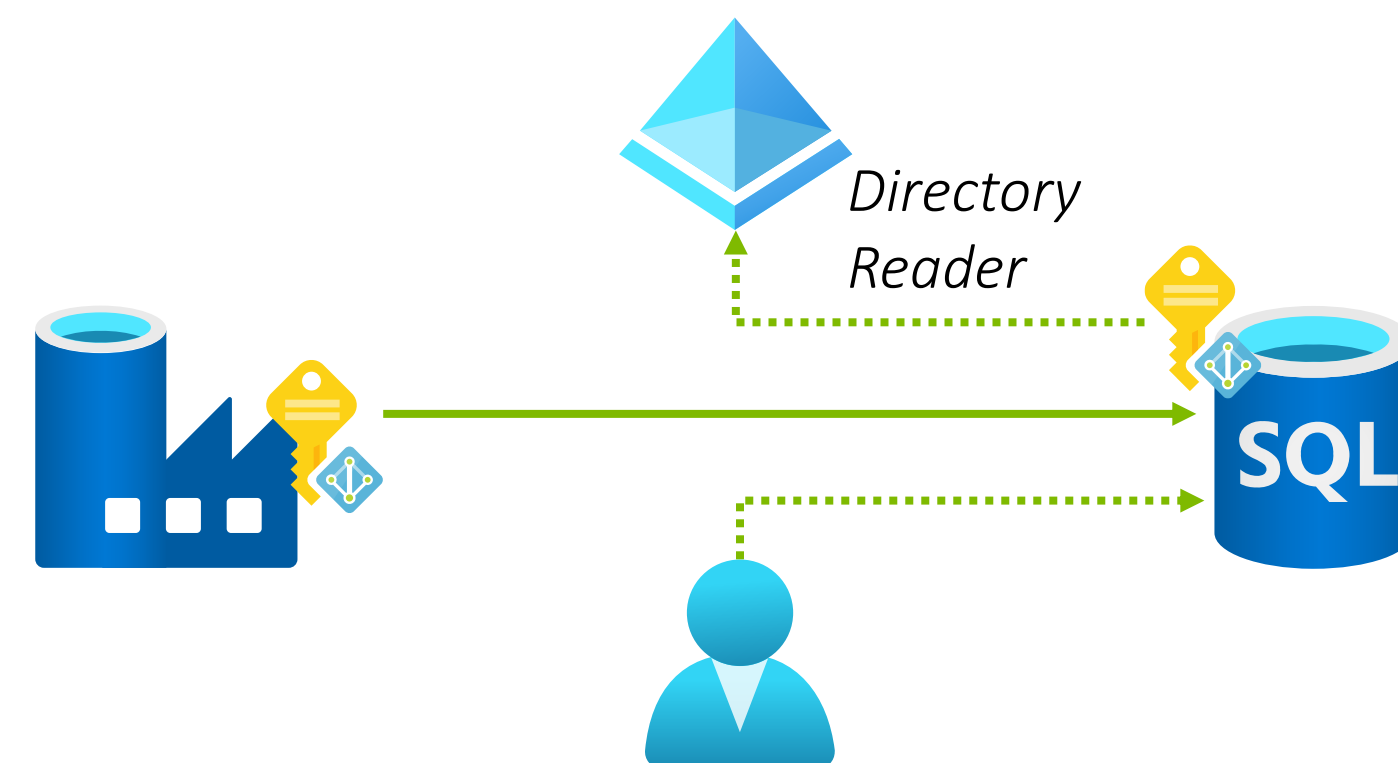
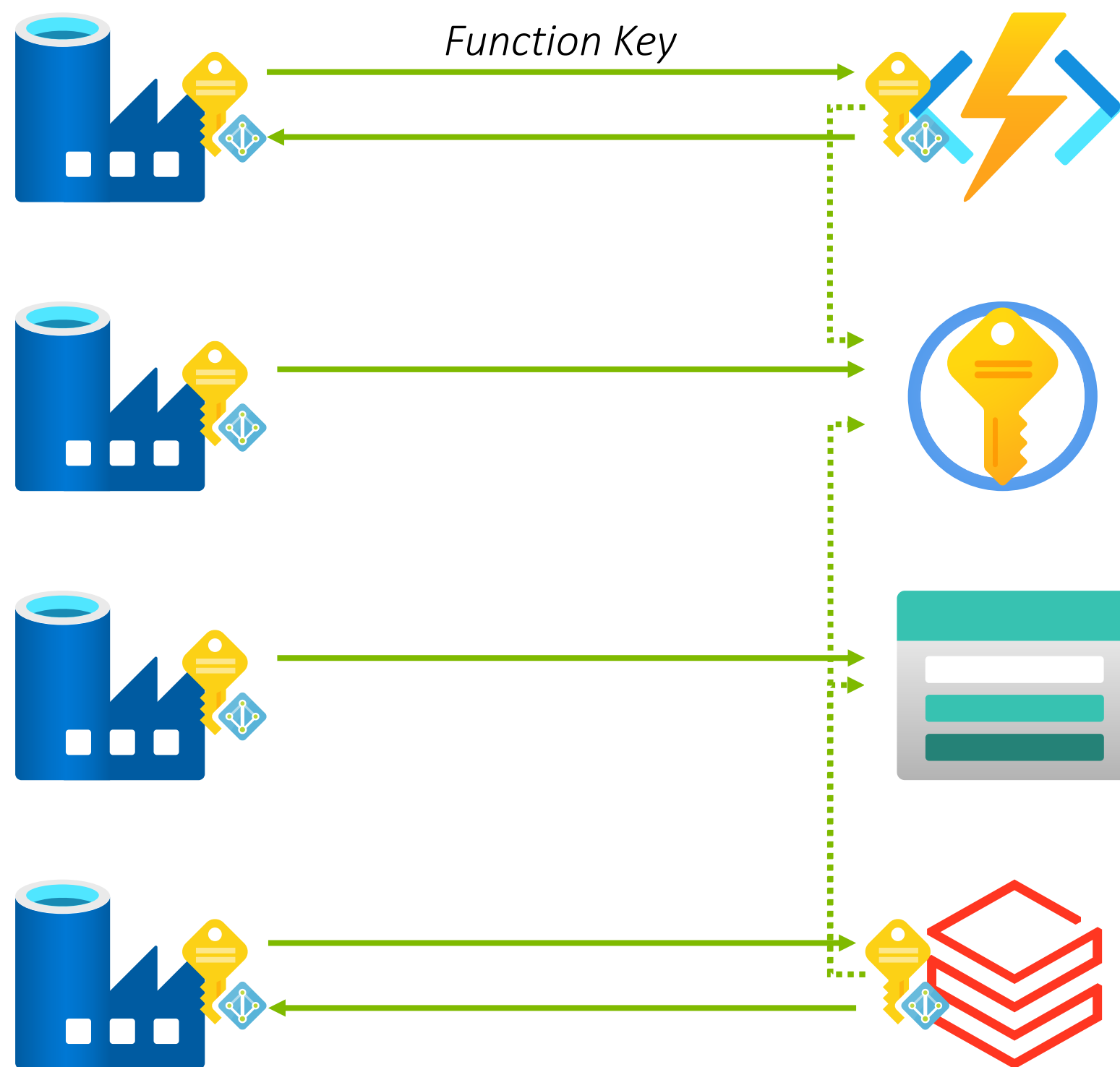
~~System User~~

Enterprise Application



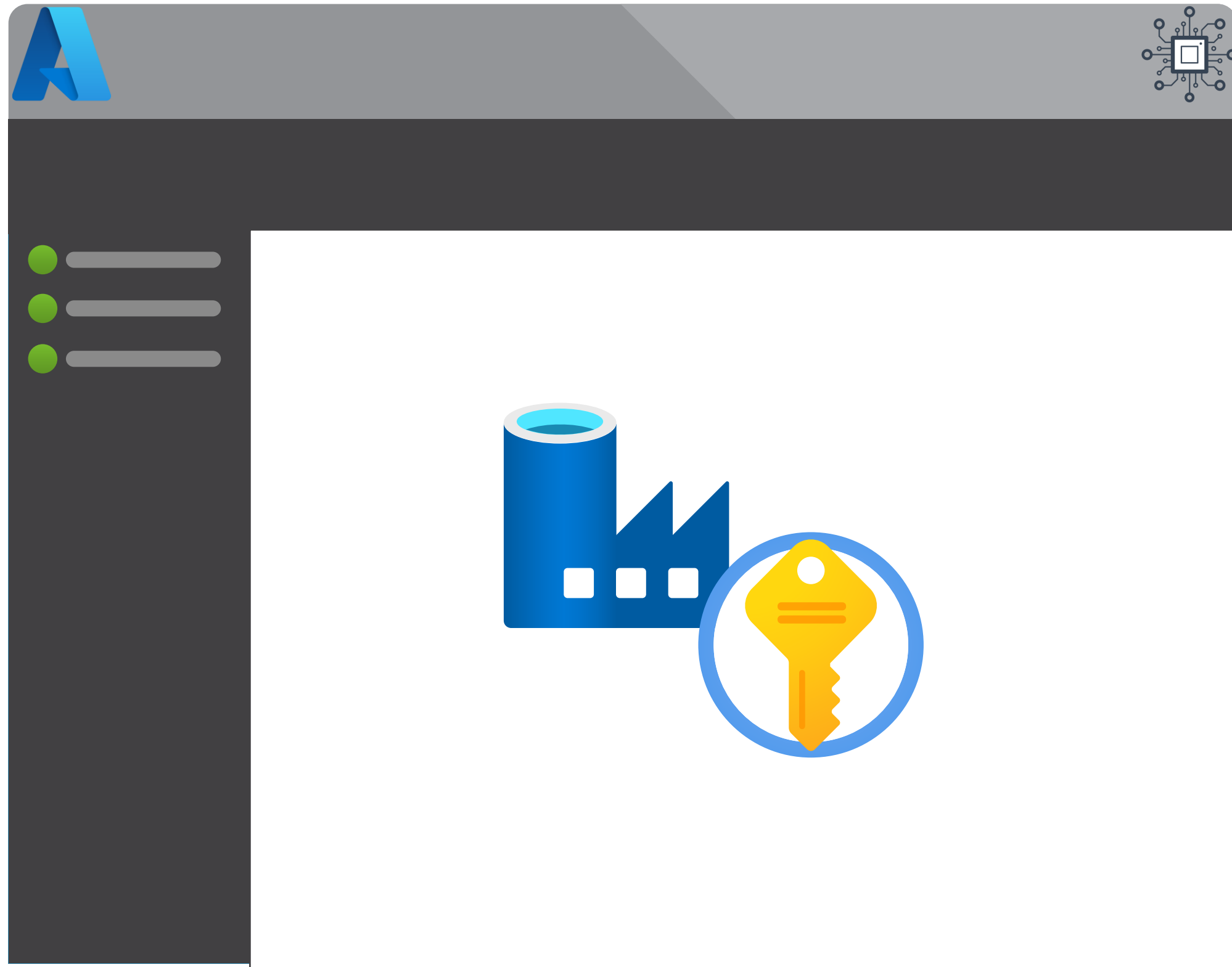


Using Managed Identities



Module 8

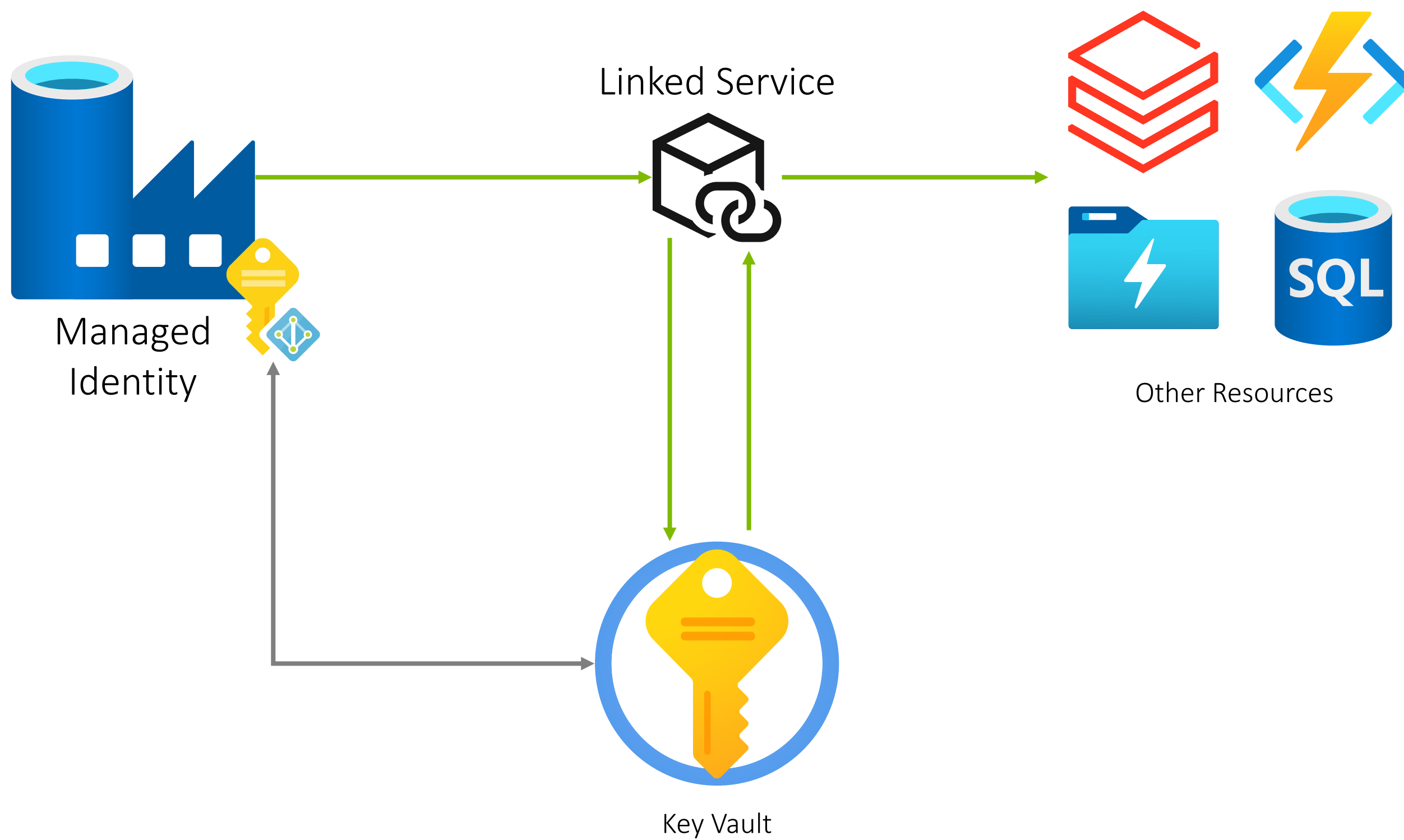
Security

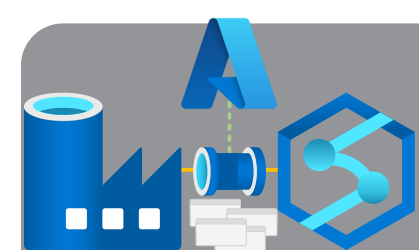


- Service Principals
- Managed Identities
- Azure Key Vault Integration
- Customer Managed Keys
- Pipeline Access & Permissions

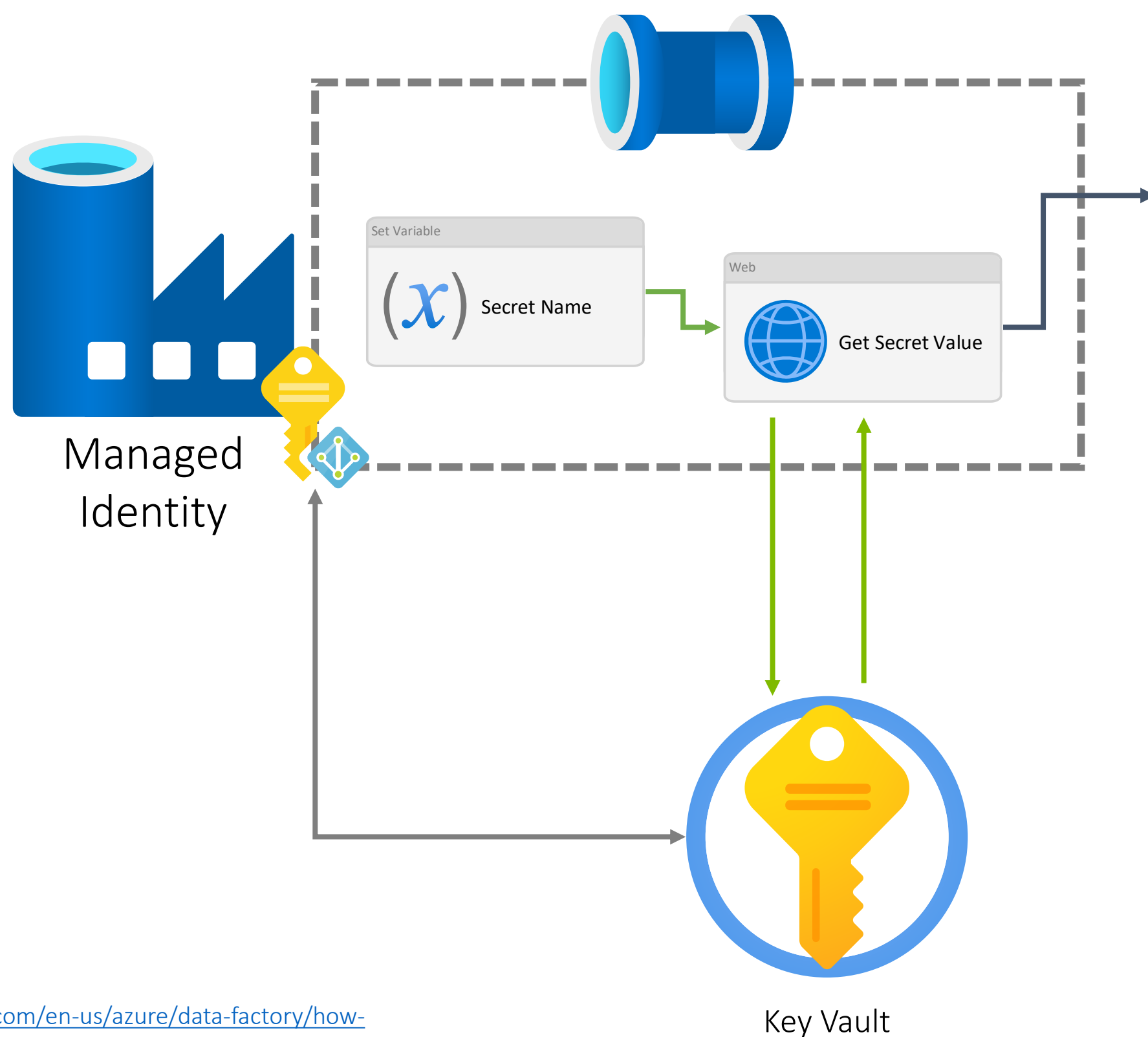
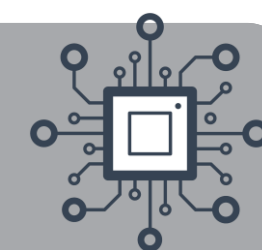


Key Vault Integration – Option 1



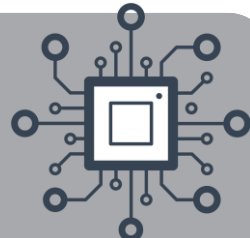


Key Vault Integration – Option 2



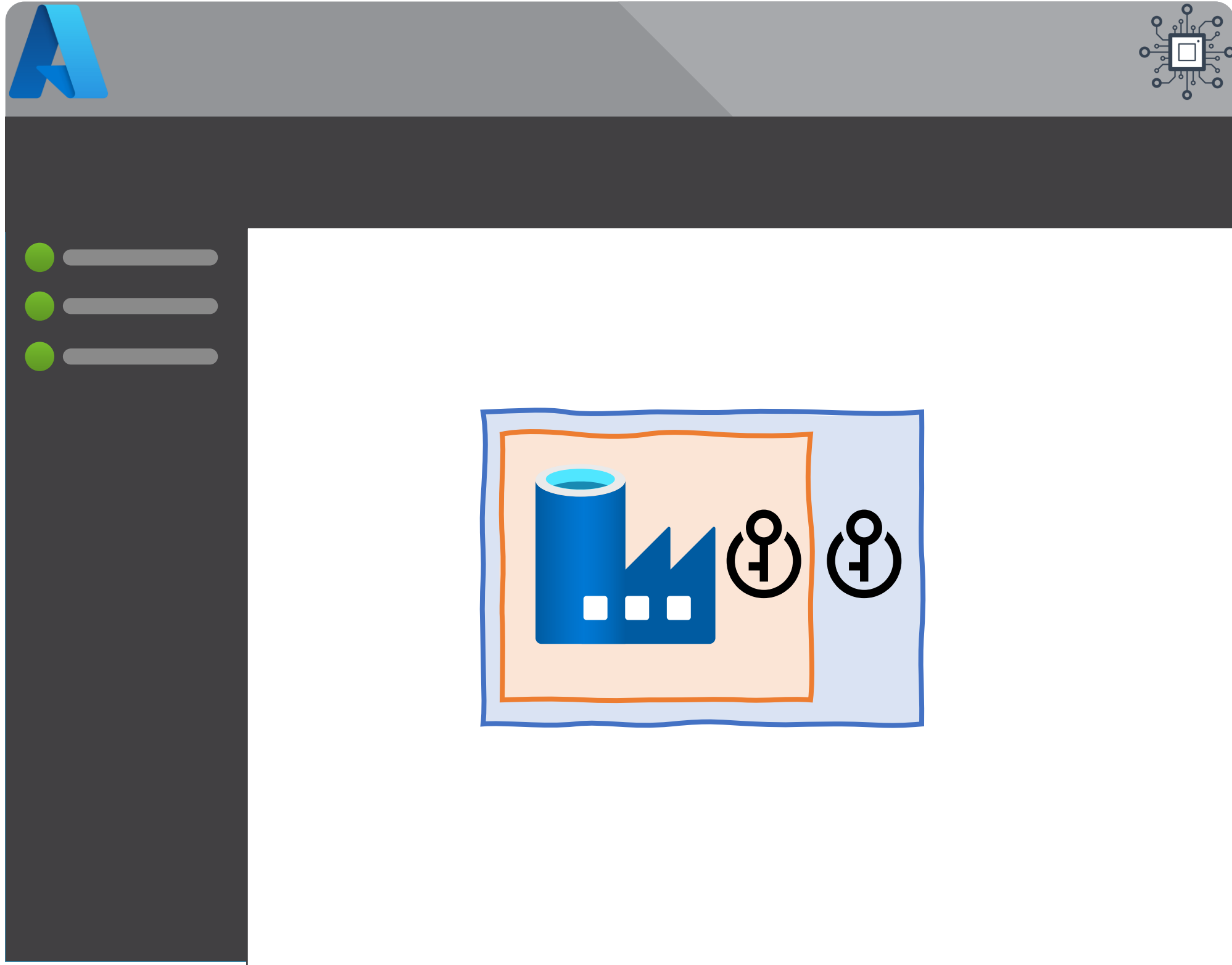
Output

```
{
  "value": "HelloWorld!",
  "id": "https://trainingkeys01.vault.azure.net/secrets/DemoKeyGetWithWebActivity/0b8ccf8e52b241eaac58ba33c7a4d8c6",
  "attributes": {
    "enabled": true,
    "created": 1645623501,
    "updated": 1645623501,
    "recoveryLevel": "Recoverable+Purgeable"
  },
  "tags": {},
  "ADFWebActivityResponseHeaders": {
    "Pragma": "no-cache",
    "x-ms-keyvault-region": "uksouth",
    "x-ms-request-id": "a17107f2-89e3-45b4-81d1-637d92d575d0",
    "x-ms-keyvault-service-version": "1.9.291.1",
    "x-ms-keyvault-network-info": "conn_type=ipv4;addr=51.104.25.10;act_addr_fam=InterNetwork;",
    "Strict-Transport-Security": "max-age=31536000;includeSubDomains",
    "X-Content-Type-Options": "nosniff",
    "Cache-Control": "no-cache",
    "Date": "Wed, 23 Feb 2022 13:42:03 GMT",
    "X-Powered-By": "ASP.NET",
    "Content-Length": "258",
    "Content-Type": "application/json; charset=utf-8",
    "Expires": "-1"
  },
  "effectiveIntegrationRuntime": "AutoResolveIntegrationRuntime (UK South)",
  "executionDuration": 0,
  "durationInQueue": {
    "integrationRuntimeQueue": 1
  },
  "billingReference": {
    "activityType": "ExternalActivity",
    "billableDuration": [
      {
        "meterType": "AzureIR",
        "duration": 0.016666666666666666,
        "unit": "Hours"
      }
    ]
  }
}
```

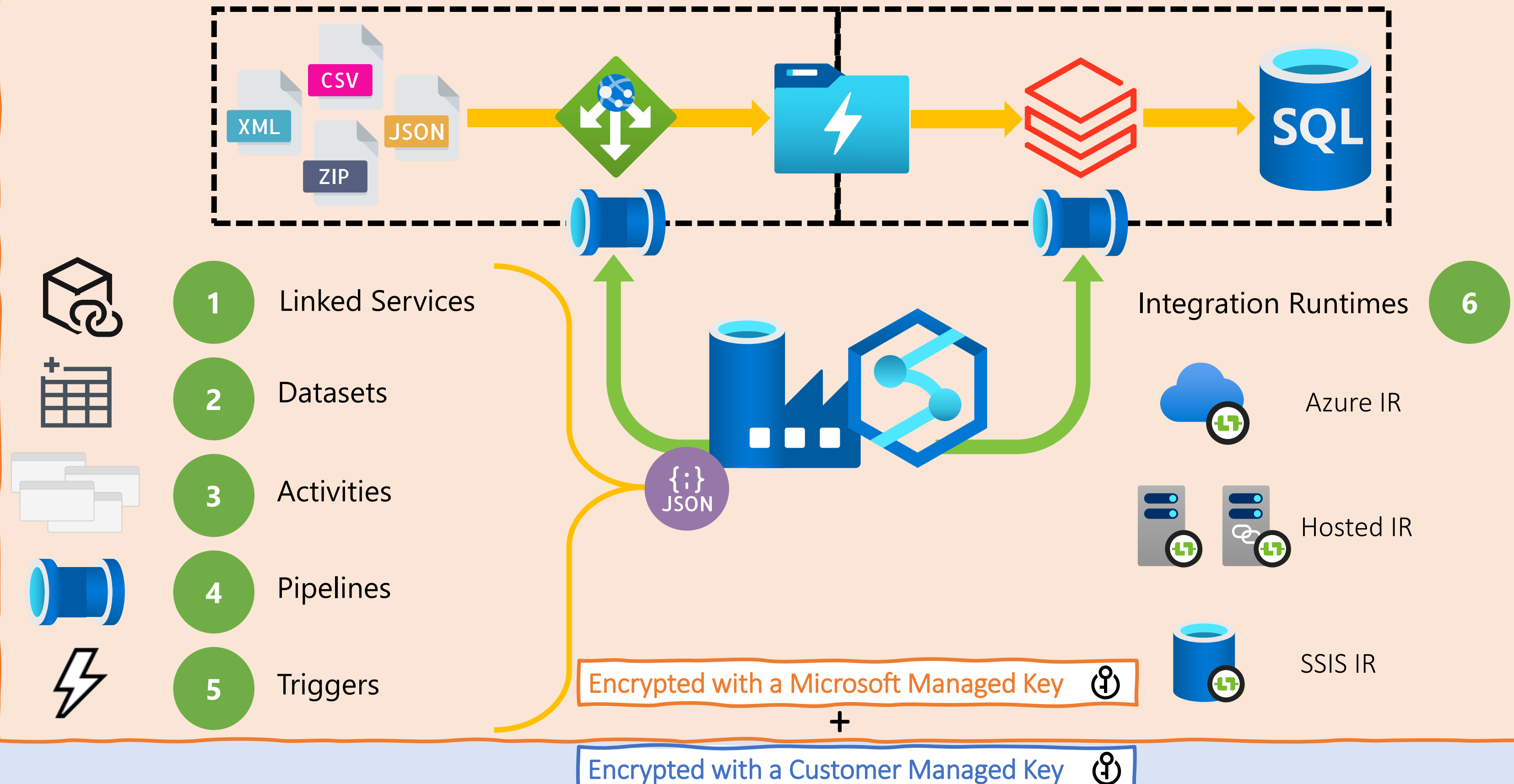
Module 8

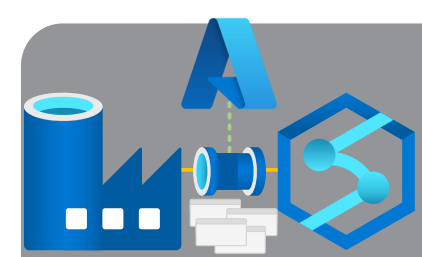
Security



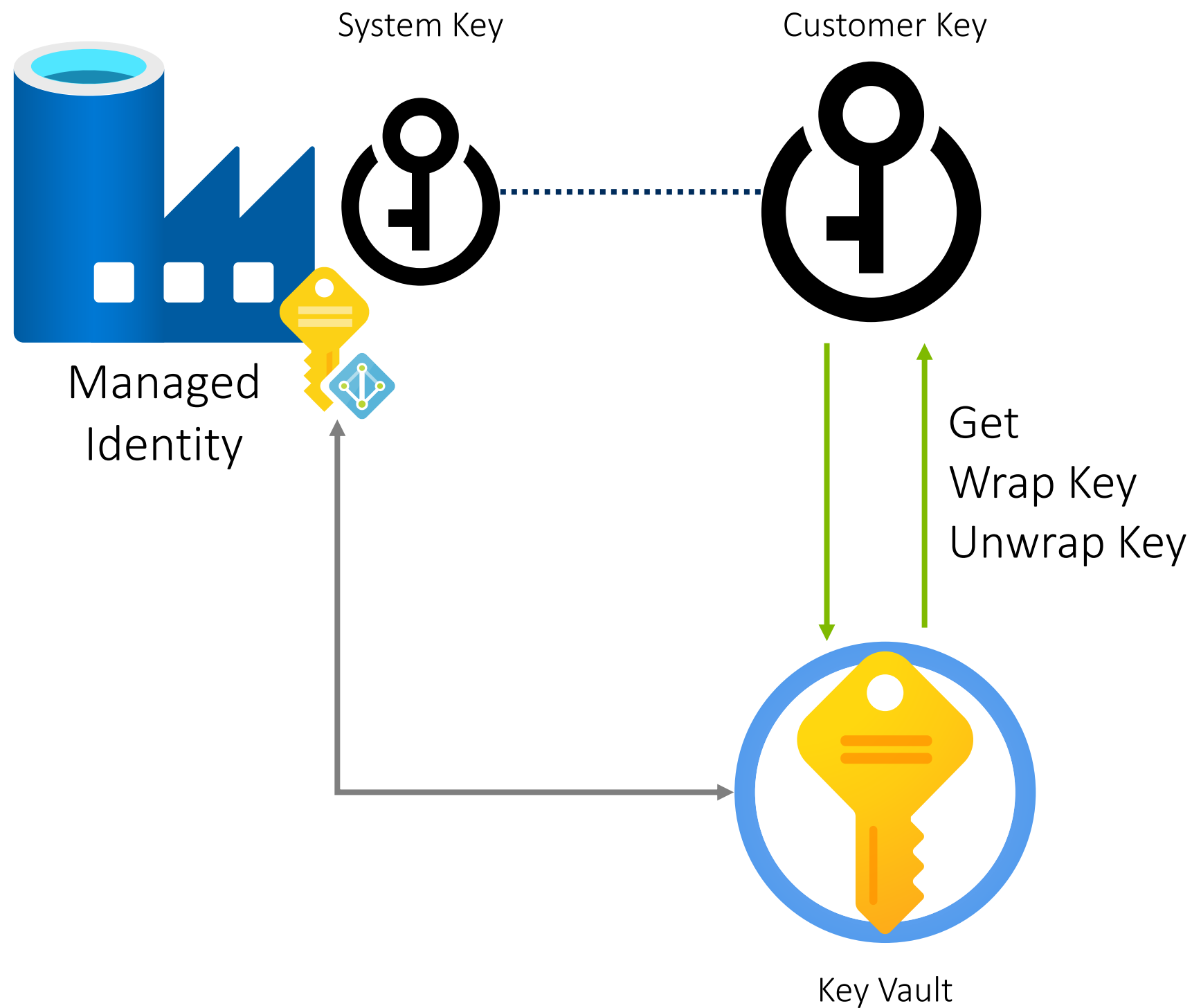
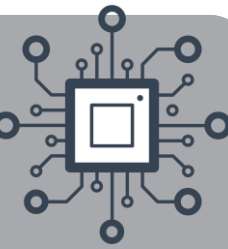
- Service Principals
- Managed Identities
- Azure Key Vault Integration
- **Customer Managed Keys**
- Pipeline Access & Permissions

Customer Managed Keys



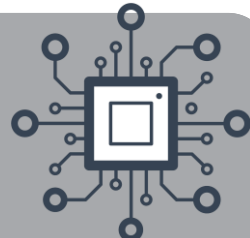


Customer Managed Key



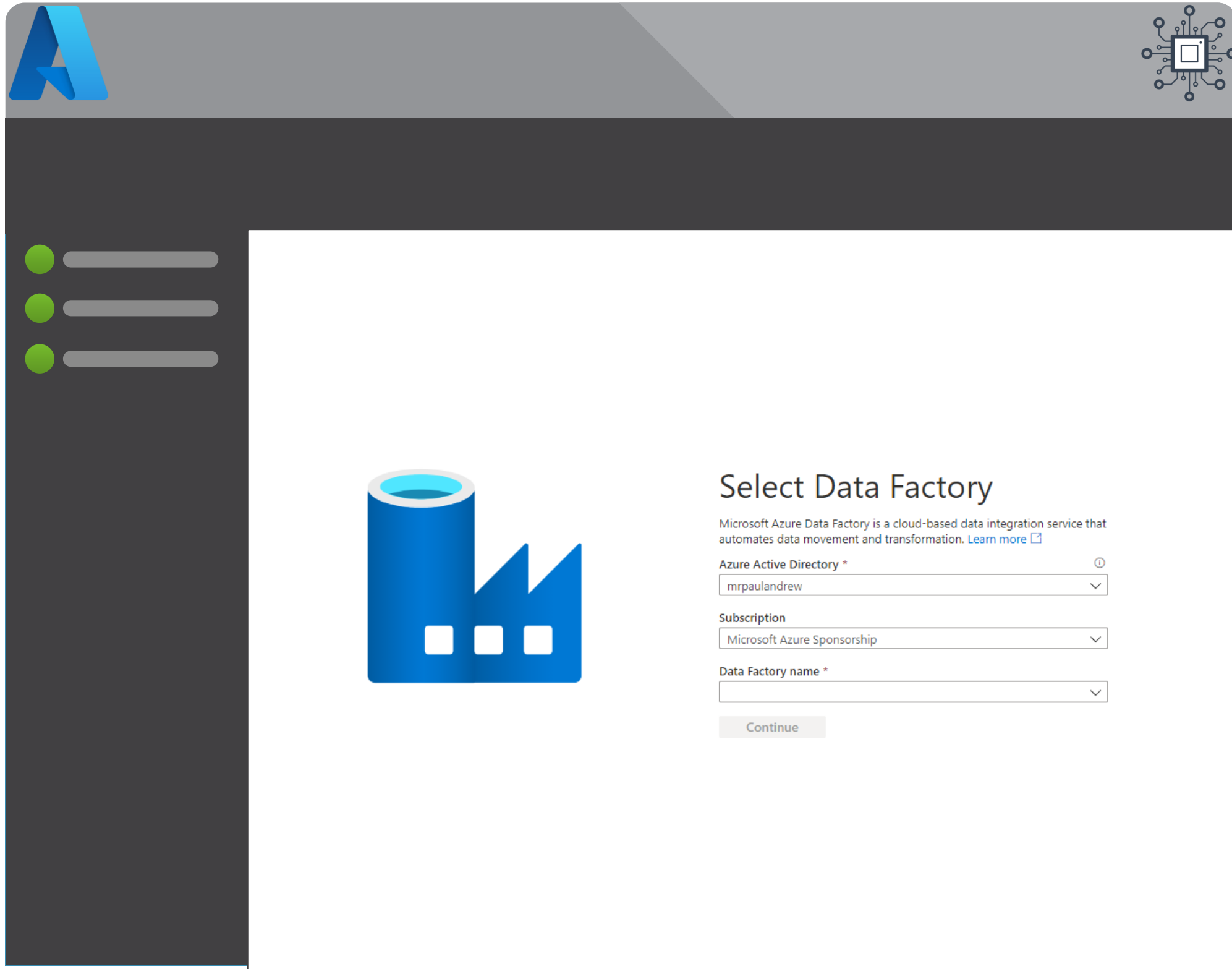
Limitations and Issues

- Customer keys can only be stored in Key Vault.
- Can't be applied to existing Data Factory instances.
- Doesn't work with Managed Virtual Networks.
- Can't be included in ARM templates definitions.
- Must be manually version controlled.

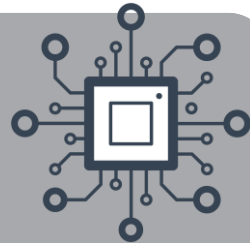


Module 8

Security



- Service Principals
- Managed Identities
- Azure Key Vault Integration
- Customer Managed Keys
- Pipeline Access & Permissions



Open Azure Data Factory Studio

Start authoring and monitoring your data pipelines and data flows.

[Open](#)



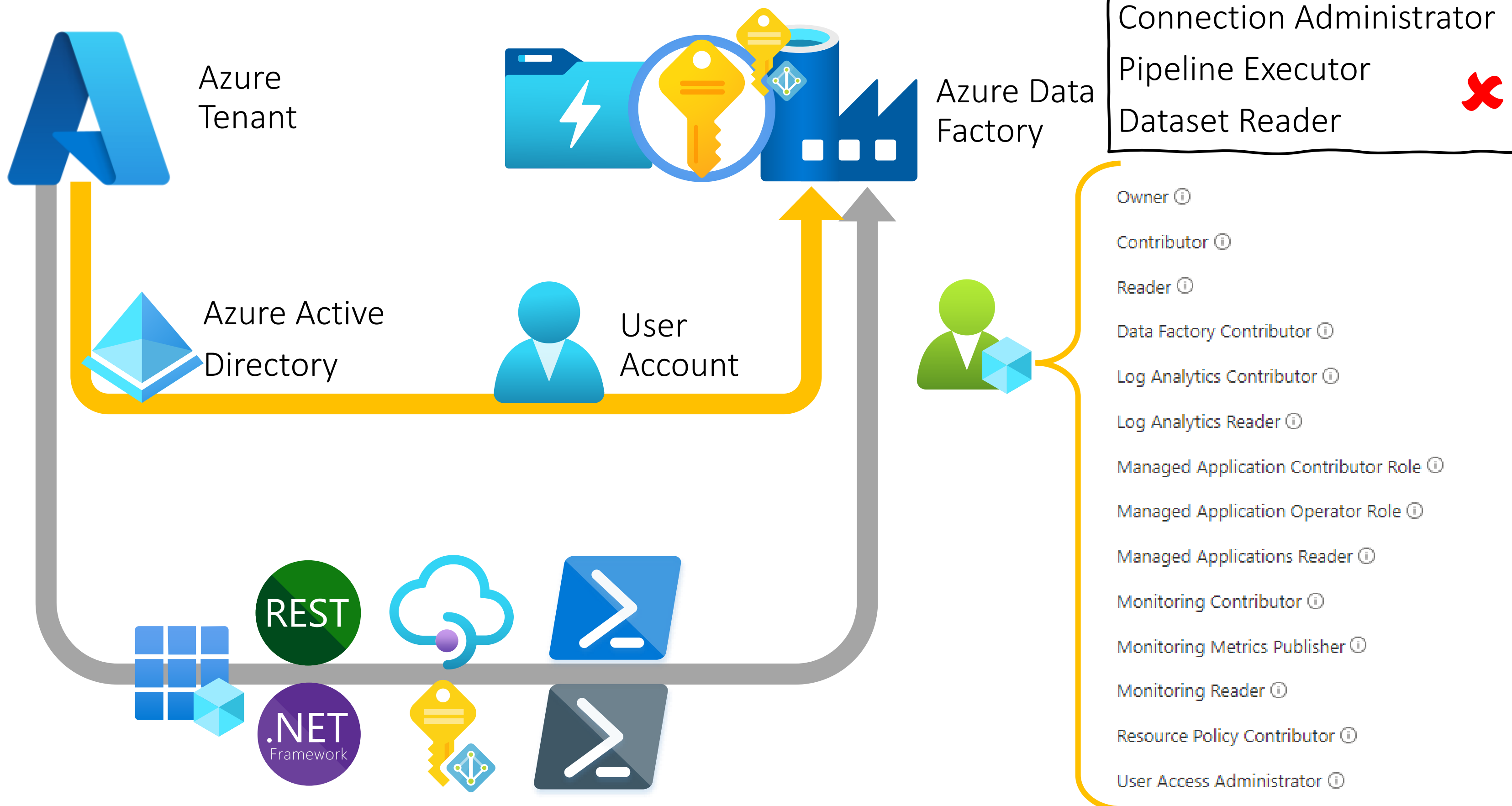
Read documentation

Learn how to be productive quickly. Explore concepts, tutorials, and samples.

[Learn more](#)



Accessing Everything via Data Factory





Accessing Data Factory – Custom Roles



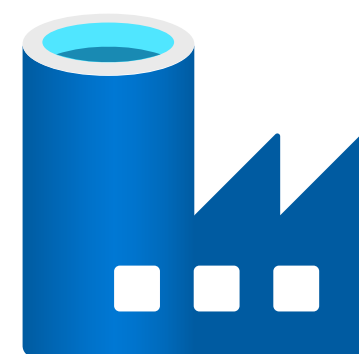
Azure
Tenant



Azure Active
Directory



User
Account



Azure Data
Factory



- Owner ⓘ
- Contributor ⓘ
- Reader ⓘ
- Data Factory Contributor ⓘ
- Log Analytics Contributor ⓘ
- Log Analytics Reader ⓘ
- Managed Application Contributor Role ⓘ
- Managed Application Operator Role ⓘ
- Managed Applications Reader ⓘ
- Monitoring Contributor ⓘ
- Monitoring Metrics Publisher ⓘ
- Monitoring Reader ⓘ
- Resource Policy Contributor ⓘ
- User Access Administrator ⓘ

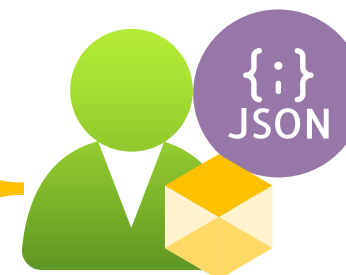
```
"Actions": [  
  "Microsoft.DataFactory/operations/read",  
  "Microsoft.DataFactory/factories/pipelines/read",  
  "Microsoft.DataFactory/factories/linkedServices/read",  
  "Microsoft.DataFactory/factories/datasets/read",  
  "Microsoft.DataFactory/factories/dataflows/read",  
  "Microsoft.DataFactory/datafactories/read"  
],
```



ADF Pipeline Executor

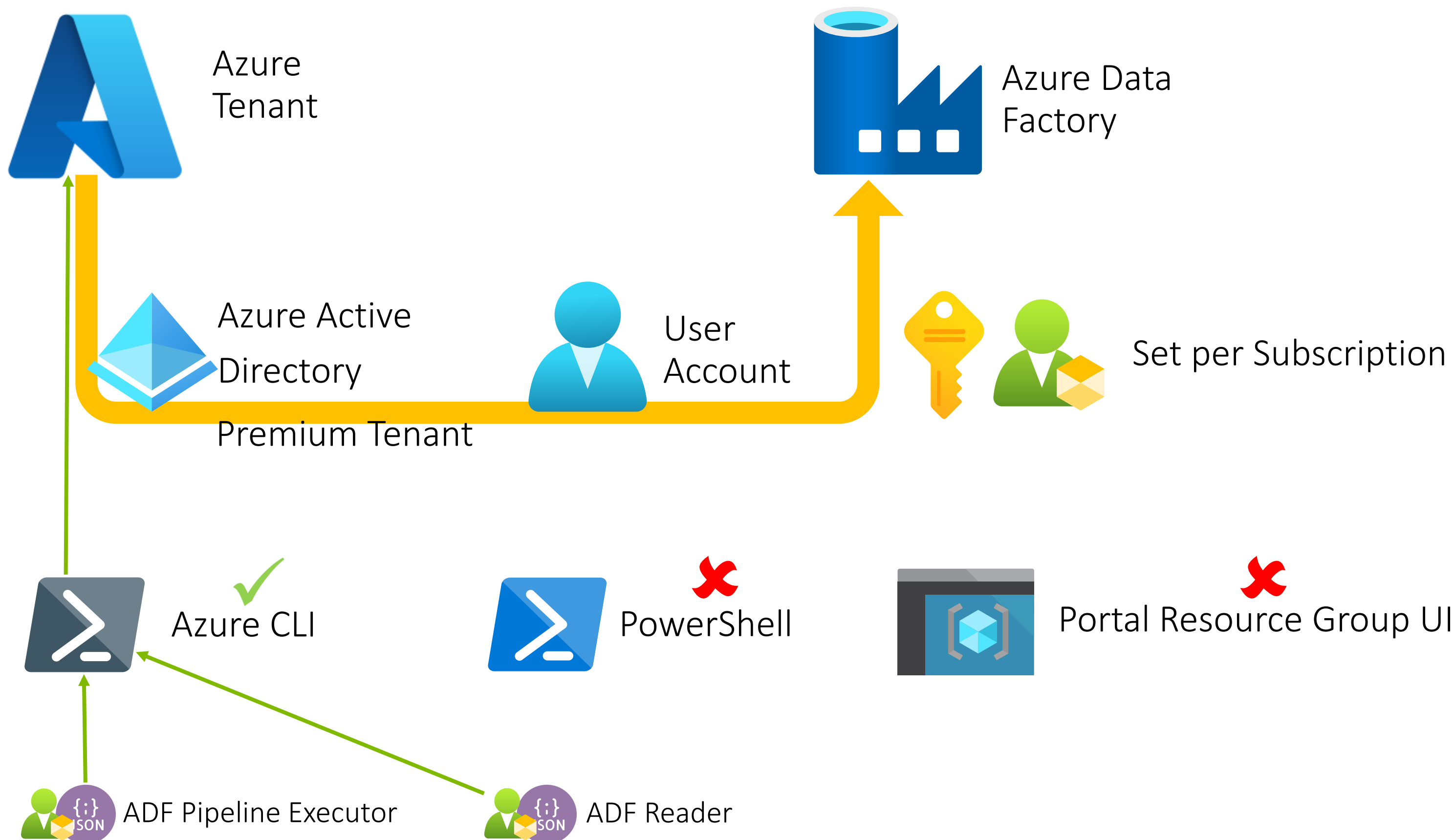


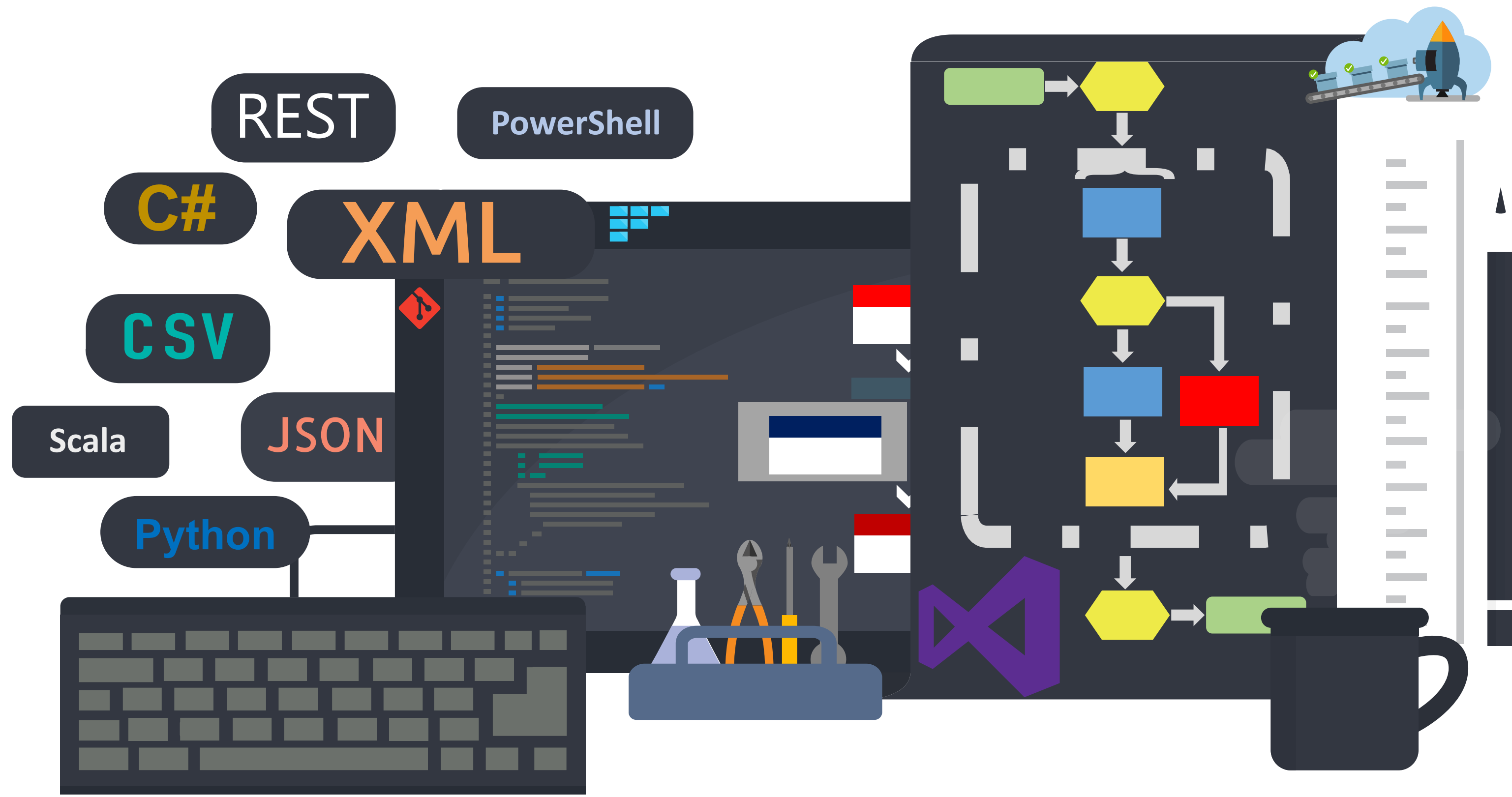
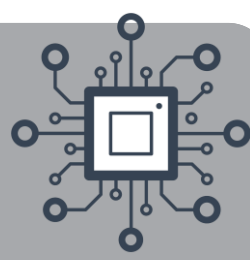
ADF Reader





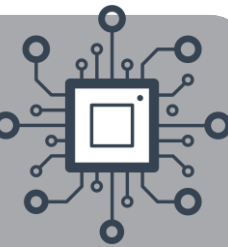
Accessing Data Factory – Custom Roles







Data Integration Pipeline – Security Layers



Auto (Default) Integration Runtimes



Dedicated Integration Runtimes



Private Endpoint Connections



Customer Managed Keys



System Managed Identities

User Managed Identities



Service Principals



Integrated Credentials *(Preview)*



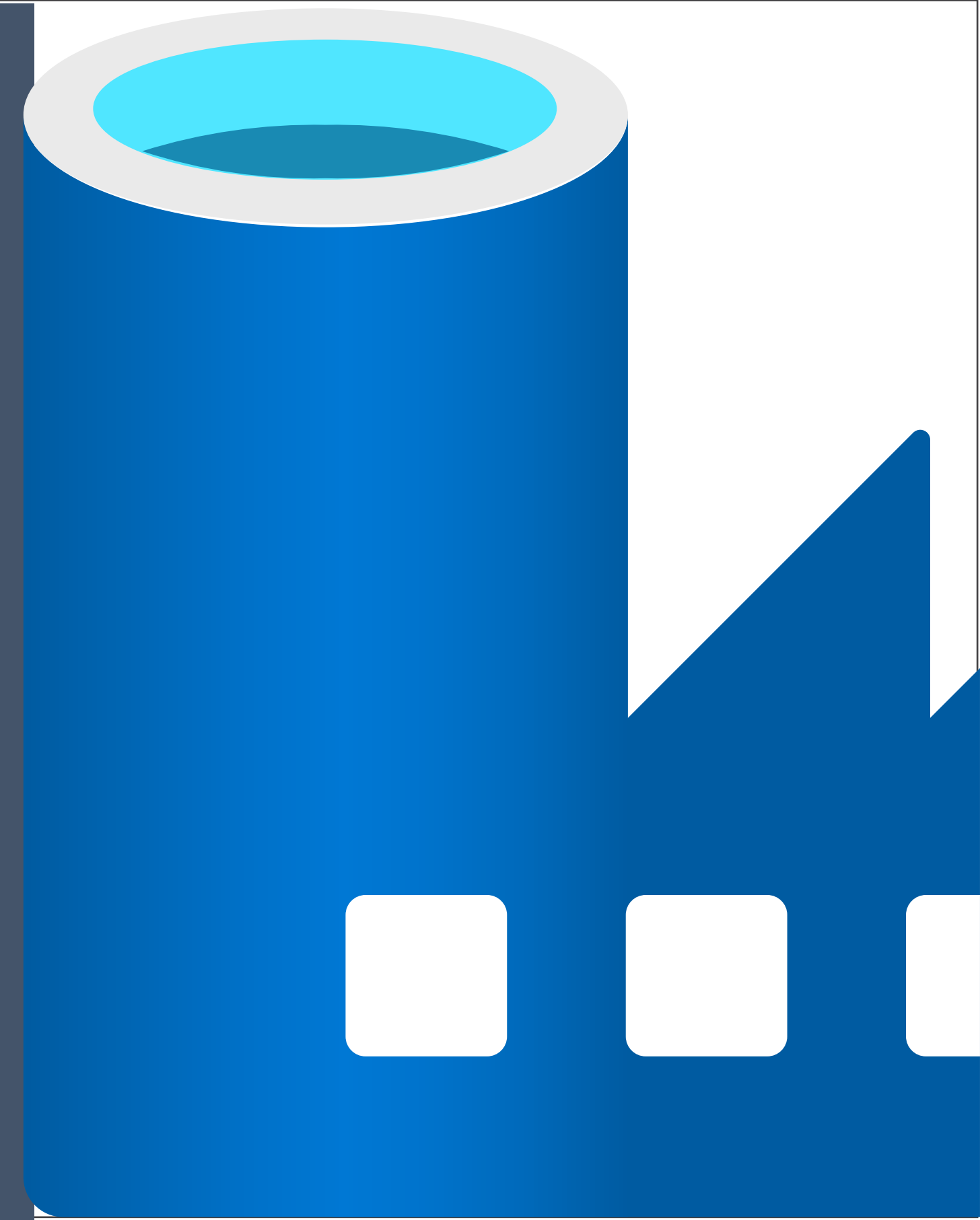
Key Store Integration



Custom User Access Roles

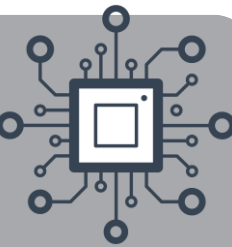


Default User Access Roles





Data Integration Pipeline – Security Layers



Auto (Default) Integration Runtimes



System Managed Identities



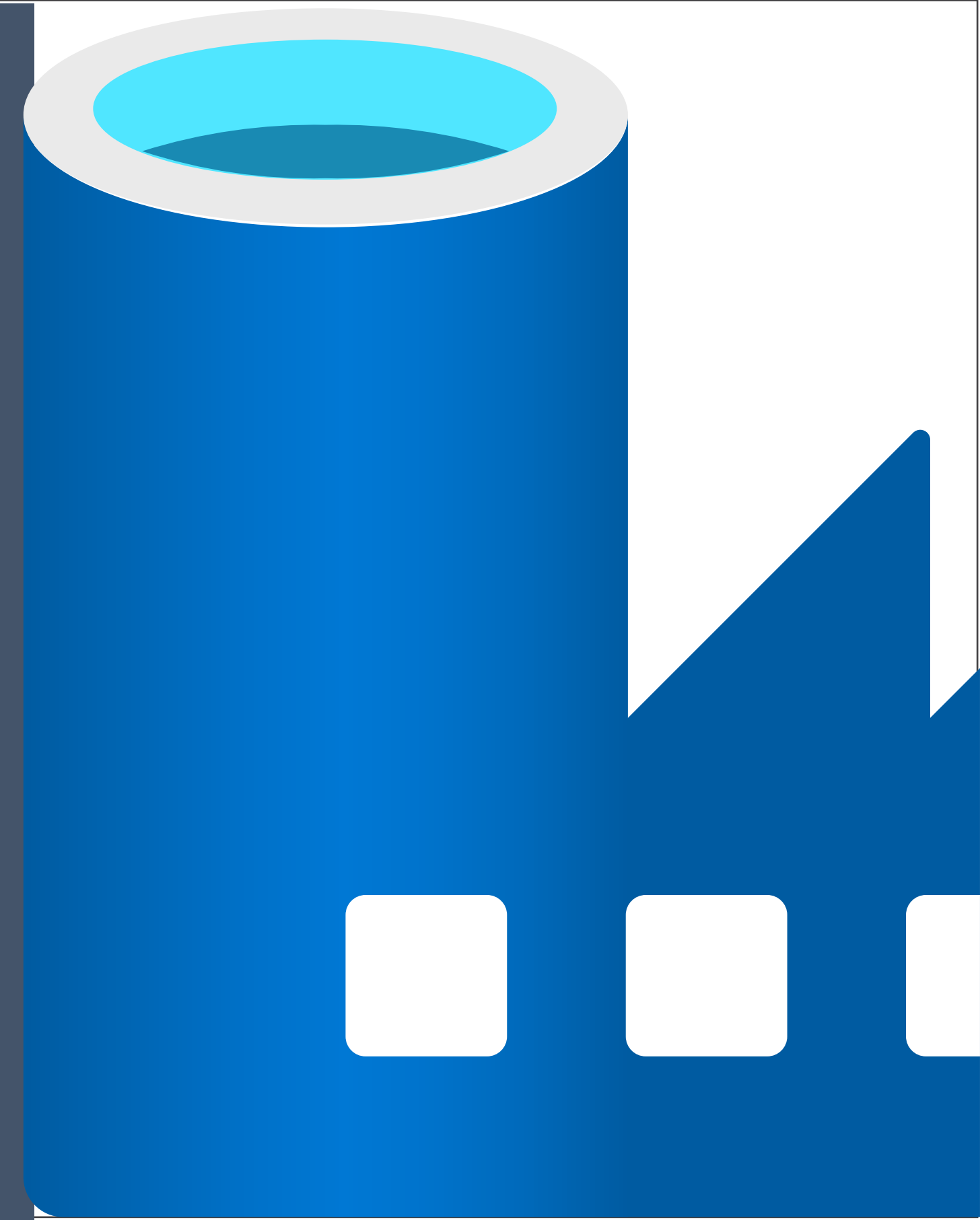
Service Principals



Key Store Integration



Default User Access Roles



Module 8

Security



```
SELECT
    [Contents]
FROM
    [Training]
WHERE
    [Module] = '8';
```

```
END; --module, fetch next
```

- Managed Identities
- Service Principals
- Azure Key Vault Integration
- Customer Managed Keys
- Pipeline Access & Permissions